



**Ural Federal
University**

named after the first President
of Russia B.N.Yeltsin

**Graduate School
of Economics
and Management**



gsem.urfu.ru/en

**STUDENT
GUIDE**

WELCOME WORD OF GSEM DIRECTOR



Dear students,

It is my great pleasure to warmly welcome you to Graduate School of Economics and Management, the largest institute of Ural Federal University!

We are sure that study at our School will help you not only to become strong professionals, but also to realize your potential. GSEM offers many opportunities for your studies and fulfillment, including lectures of international professors, exchange semester in a foreign university for full-time students, participation in the School research life and activities of corporate partners. GSEM Students' Union aims to make your student life diverse and bright.

We created this guide to help you prepare for your visit and quickly adapt for life in Ekaterinburg. Here you will find a pre-arrival piece of advice, as well as practical information about the first steps in GSEM and life in our city. You will learn about GSEM structure and services for foreign students. It also includes useful contacts, and first of all, International Affairs Office and directors of your degree programmes.

We hope that study at GSEM will become one of your most interesting and motivating experiences and you will enjoy life in Russia!

Dmitry Tolmachev,
Director of Graduate School of Economics and Management

ABOUT THE SCHOOL

more
than **5500**
students

60 partner
universities

over **700** partner
employers

9 international programmes:
Bachelor's, Master's, Doctoral

6 Double Degree Options
with Internationally recognized partners

6 journals: «Economy of the Region» «The International Journal of Energy Production»
«Bulletin of Ural Federal University. Series Economics and Management»
«R-Economy» «Journal of Tax Reform»
«University Management: Practice and Analysis»

more
than **100** courses taught
in English

350+ international students
from **50** countries

STUDIES

We offer programmes in various majors: Economics, Management, Business Informatics, Public Administration, Commerce, PR and Advertising, Public Policy and Social Sciences, Public Audit, Economic Security, Customs, Legal Support of National Security, Forensic Science with over 40 bachelor's, masters's, specialist's and doctoral programmes.

FACULTY

The School's main asset is the faculty. They are highly skilled professionals in teaching, as well as practitioners with many years of experience. More than 67% of academic staff hold a doctoral degree. Every year more than 30 visiting professors from leading international universities and business schools come to share their knowledge and experience with students of our School.

MEMBERSHIP IN INTERNATIONAL ASSOCIATIONS



ACCREDITATIONS



The Bachelor's programme [International Economics and Business](#) received EFMD Programme Accreditation in 2015.

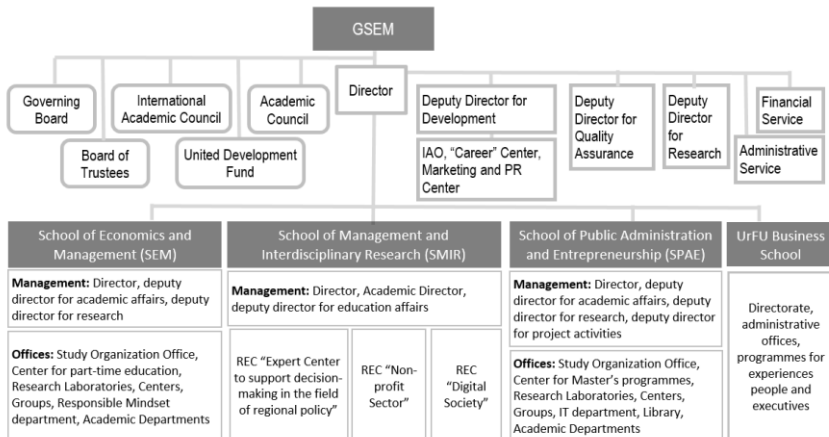


The programme [International Management](#) (track International Financial Management) obtained ACCA accreditation in 2016. ACCA (the Association of Chartered Certified Accountants) accreditation is an exemption accreditation awarded to programmes or institutions whose regulations, syllabus and assessments meet ACCA's requirements.

GSEM IN NUMBERS

- More than **5500** students
- More than **100** PhD students
- More than **67%** of academic staff with a doctoral degree
- **42** Bachelor's, Master's and Specialist's programmes
- **6** double degree programmes with leading European Business schools
- More than **350** international students from **50** countries
- **60** partner universities from 26 countries
- Over **700** partner employers

STRUCTURE



Research departments

- **Laboratory for International and Regional Economics**
Headed by Hans Wiesmeth
- **Laboratory for Applied System Research**
Headed by Dr. Sergey V. Kruglikov
- **Research group «Engineering and Economics Interdisciplinary - Research in Energy and Hi-Tech Industries»**
Headed by Dr. Elena. R. Magaril
- **Research group «Engineering and Economic Studies of Economic Security Issues»**
Headed by Dr. Igor. A. Mayburov
- **Development project «Philanthropy and social programmes in business»**
- Headed by Elena P. Chernyshkova
Research group «Challenges of University Development»
Headed by Dr. Gavriil A. Agarkov
- **Development project SAU Industry 4.0**
Headed by Alexey K. Kluev, coordinated by Irina D. Turgel
- **Center for Social policy studies**
Headed by Dr. Anna Bagirova

Administrative offices

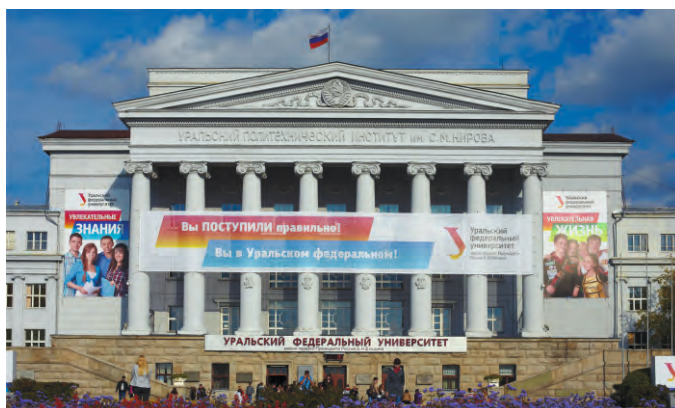
- GSEM Director's Office: Mira str., 19, office И-439, tel. + 7 (343) 374-35-72, 375-48-80
- Dean's Office: Mira str., 19, office И-415, tel. +7 (343) 375-48-45

Other structural divisions

- International Affairs Office:
 - Mira str., 19, office И-437, tel. +7 (343) 375-94-92
- Career Centre: Mira str., 19, office И-437, tel. +7 (343) 375-94-92
- PR and Marketing Centre
- Academic Affairs Office

QUICK FACTS ABOUT UrFU

- The largest federal university in Russia
- Established in 1920
- Motto: Think. Act. Achieve.
- Total enrolment: about **35 000**
- Faculty members: more than **4 000**
- International students from **100** countries all over the world
- Alumni: more than **360 000**
- **Top-5** best Russian universities (Expert RA rating agency)
- **27th** among the best universities of **the Emerging Europe and Central Asia (QS)**
- **QS World University Rankings by Subject:**
 - 351st** in the world and **7th** in Russia – Social Sciences & Management
 - 401-450** in the world and **6th** in Russia – Business & Management
 - 451-500** in the world and **10th** in Russia – Economics & Econometrics.
- **Times Higher Education: 401-500** in Business & Economics



Ekaterinburg

Ekaterinburg is the fourth-largest city in Russia with a population of over 1,4 million people. It is located on the eastern slopes of the Ural Mountains, exactly on the border between Europe and Asia, on the banks of the Iset river. The city is an administrative centre of the Sverdlovsk region.

Founded in 1723, it has since become a powerful industrial and business centre. Its heavy machine-building, metallurgical, and military industrial plants won Ekaterinburg the reputation of the country's "industrial heart". The unique geographical position allowed the city to assume the role of the meeting point and centre of cooperation between East and West.

In the XXI century Ekaterinburg has seen a boost of trade, business and tourism. To-day the city hosts such important events as BRICS and SCO summits, heads of state meetings. In 2018 it was one of the host cities for FIFA World Cup.

Ekaterinburg is also a major cultural centre. It has a large number of theatres, museums, cinemas, concert halls. It is home to the Ural Industrial Biennale, Vienna Music Film Festival, La Folle Journée, numerous theatre and musical festivals, open airs and exhibitions.



MUST-SEE SIGHTS IN EKATERINBURG



Cathedral-on-the-Blood



Monument to Founders of Ekaterinburg –
Tatischev and de Hennin



Yeltsin Center



Historical Public Garden



Opera and Ballet Theatre



Sevastyanov House



Rastorguyev-Kharitonov's Mansion and Park



Botanical Garden



Vysotsky Business Center – viewing platform

DEGREE PROGRAMMES IN ENGLISH

Here are the programmes offered at GSEM UrFU partially or entirely taught in English. You can also find the name of programme directors here. If you are a prospective student willing to pursue a degree or you would like to contact a programme director, please connect with International Affairs Office of GSEM UrFU, econ.international@urfu.ru.

— International Economics and Business (Double Degree, EFMD Accredited)

Degree: Bachelor in Economics

Credits: 240 ECTS

Duration: 4 years

Language of instruction: 60% English/ 40% Russian

Highlights:

- EFMD Accredited
- Business English learning
- 2 years taught in English (and some courses of 1st and 2nd years)
- Opportunities to participate in exchange programmes with foreign partner universities partially funded by GSEM
- Internships in international partner corporations and public authorities of the Sverdlovsk region
- Leading foreign scholars in economics and management, representatives of international partner companies engaged in teaching

Double degree programme with:

1. KEDGE Business School (France)
2. Zagreb School of Economics and Management (Croatia)
3. HEC Management School University of Liege (Belgium)

Programme Director – Prof. Zhanna S. Belyaeva, PhD

— International Management (Double Degree)

Degree: Master in Management

Credits: 120 ECTS

Duration: 2 years

Language of instruction: English

Double degree programmes with:

1. HEC Management School University of Liege (Belgium)
2. Pforzheim University (Germany)

Highlights:

- Focus on of practical skills development in scientific research and in solving specific problems of real businesses
- Exchange semester at any of the GSEM programme partner universities
- Whole spectrum of management fields in international context: strategic

management, HR management, marketing, logistics, financial management and accounting and legal basis of entrepreneurship

Programme Director – Prof. Dr. Liudmila S. Ruzhanskaya

Applied and International Economics

Degree: Master in Economics

Credits: 120 ECTS

Duration: 2 years

Language of instruction: 50% Russian/ 50% English

Highlights:

- Focus on the acquisition of practical skills in scientific research and in solving specific problems
- Exchange semester at any of the programme partner universities
- Whole spectrum of applied and economics fields in international context: microeconomics, macroeconomics, econometrics, game theory, data analysis and etc.

Programme Director – Prof. Oleg S. Mariev, PhD

International Trade and Entrepreneurship

Degree: Master in Business and Commerce

Credits: 120 ECTS

Duration: 2 years

Language of instruction: English

Highlights:

- The program provides a sound knowledge in the core entrepreneurial areas of marketing, finance, economics and human resource management and expands on this knowledge in the context of international trade, government policy and regulations with regards to global entrepreneurial operations.
- Students will experience multi-cultural fluency by participation in a culturally diverse student cohort, multicultural and multi-lingual faculty, and the opportunity study in Asian, European, and North American universities, which represent the best educational practices.

- Exchange semester at one of the programme partner universities
- Programme Director - Prof. Dr. Sergei Polbitsyn

— PR & Advertising in International Communications

Degree: Master in Public Relations and Advertising

Credits: 120 ECTS

Duration: 2 years

Language of instruction: English

Highlights:

- Focus on gaining invaluable practical experience of intercultural communication, which will be useful to them in their future professional activities in enterprises cooperating with Russia or Brazil, or in government bodies involved in international activities, or in non-profit organizations

Programme Director - Prof. Galina Savchuk, PhD

For more information about these programmes, as well as other programmes available, please visit [GSEM web-site](#).

SCHOLARSHIPS

Note: Citizens of Belarus, Kazakhstan, Kirgizia, Tajikistan, Georgia as well as compatriots living abroad have the right to study full-time at Ural Federal University on budgetary places on a competitive basis.

— Russian Government Scholarships

All international students can apply for the grants of the Russian Government according to the intergovernmental agreements. The Government annually forms a plan of admissions of international students, allocating certain number of places for each country. Allocation of quotas is carried out by Rossotrudnichestvo (The Federal Agency for the Commonwealth of Independent States, Compatriots Living Abroad, and International Humanitarian Cooperation) through its international network of offices, as well as through embassies of Russia abroad. The nature of the scholarship can vary, based on agreements between the Russian Federation and your home country. To learn more, please visit <http://studyinrussia.ru/en/study-in-russia/scholarships/>.

EXCHANGE PROGRAMMES

INCOMING STUDENTS

GSEM UrFU invites students from foreign universities to spend a semester or a year in Ekaterinburg.

If you are an **exchange student** from one of our partner universities, your tuition fees are waived.

If your home university has no bilateral agreement with GSEM or UrFU, you can still come as a tuition-paying student called **free mover**.

We are a part of ECTS system, so you can earn credits for your home degree while gaining invaluable international experience. You also have the opportunity to learn Russian as we offer free courses for all exchange students.

Requirements

To be eligible for tuition waiver, please check that your home university is on the list of GSEM or UrFU partner universities. Lists are available on respective web-sites or you can contact the international office of your home university and ask them if there is an exchange agreement with GSEM or UrFU. [List of partners](#).

You must also have at least 2 semesters for bachelor students or 1 semester for master students at your home university.

You must speak English at level B2 or higher. The Russian language knowledge is not obligatory if you do not want to take courses taught in Russian.

Application procedure

First step

Contact your home university outgoing mobility coordinator who can nominate you for an exchange programme with GSEM.

Second step

After the nomination by your coordinator, you must fill in the online application form and gather the following documents:

- CV
- Motivation letter
- Enrolment Letter
- Transcript of record for completed semesters at your home university indicating GPA
- Passport scan

Third step

Send the documents to econ.international@urfu.ru before the deadline along with accommodation request (if needed).

After that, we will issue an invitation letter necessary to obtain a Russian study visa.

Deadlines for application:

Fall semester – **June 30th**

Spring semester – **November 30th**

Student exchange coordinator

Valeriya Nikonenko

Tel.: +7 (343) 375-94-92

Email: valeria.nikonenko@urfu.ru

GSEM UrfU COURSES FOR VIRTUAL MOBILITY: SPRING 2021

Our virtual courses are presented in two programs: International Economics and Business (bachelor's programme) and International management (master's programme). You can choose and take courses as a whole semester, or choose single courses.

International Economics and Business (bachelors, EFMD Accredited):

3 year:

1. Business Planning in International Activities
2. International Monetary Relations
3. International marketing
4. International Business
5. Theory of International Trade

4 year:

1. Strategic market analysis
2. Strategic management
3. Cross-cultural management and international protocol
4. Corporate governance

International Management (masters, International Financial Management track is ACCA accredited)

1. Derivative Financial Instruments
2. Purchasing Technologies
3. Sustainable Development
4. F2 Management Accounting
5. Global Supply Chain Management

All questions about participation in GSEM student virtual mobility programme please address to Valeriya Nikonenko, manager of International Affairs Office GSEM URFU - valeria.nikonenko@urfu.ru

GSEM INTERNATIONAL SHORT-TERM PROGRAMMES

<i>Course</i>	<i>Dates</i>	<i>Focus area</i>
<i>Study Tour</i> Study Like a Russian	March 30-April 3	Learning and cultural integration
<i>Summer School</i> Doing Business in Russia: Global Drivers and Local Context	July 3-11	International management
<i>Summer Intensive</i> Advanced Econometrics: Theory and Application	July 13-17	Econometrics
<i>Legal Business Quest</i> KGB: Keys to Governance and Business	July 21-30	Law
<i>Autumn School</i> Sustainable Business Development: Smart Future for All	November 6-15	International business

Contact person

Nadezhda Poylova

E-mail: econ.international@urfu.ru

Tel.: +7 (343) 375-94-92

Details and registration




LIST OF PARTNER UNIVERSITIES (as of June 2021)

Belgium

 **HEC LIÈGE**
HEC Management School,
University of Liege

 **EPHEC**
University College


Brazil


 **Universidade Federal de Ouro Preto**
Federal University of Ouro Preto


Canada

 **Laurentian University**
Faculty of Management, Laurentian University


Croatia

 **zagrebačka škola ekonomije i managementa**
zagreb school of economics and management


 **Ekonomski Fakultet**
Faculty of Economics, University of Rijeka

 **University of Zagreb Faculty of Economics and Business**
University of Zagreb

Czech Republic

 **VSE**
Prague University of Economics and Business (VSE)

 **UNIVERSITY OF WEST BOHEMIA PILSEN**
University of West Bohemia

 **ŠKODA AUTO University**
ŠKODA AUTO University

Finland

 **jamk.fi**
JAMK University of Applied Sciences

France

 **TELECOM Management**
Institut Mines-Télécom Business School

 **La Rochelle BUSINESS SCHOOL**
La Rochelle Business School

 **EM NORMANDIE**

EM Normandie

 **IAE MONTPELLIER**

IAE Montpellier School of Management (Montpellier University)

 **MONTPELLIER BUSINESS SCHOOL**

Montpellier Business School

 **ESC PAU**

ESC PAU BUSINESS SCHOOL

 **GRENOBLE ECOLE DE MANAGEMENT**

Grenoble Ecole de Management

 **RENNES SCHOOL OF BUSINESS**

Rennes School of Business

 **KEDGE BUSINESS SCHOOL**

KEDGE Business School

 **PSB PARIS SCHOOL OF BUSINESS**

PSB Paris School of Business

 **esdes**
THE BUSINESS SCHOOL OF UCL

ESDES School of Business and Management, Catholic University of Lyon


 **NEOMA BUSINESS SCHOOL**
REIMS - ROUEN - PARIS

NEOMA Business School

Germany

 **HUMBOLDT-UNIVERSITÄT ZU BERLIN**

Humboldt-Universität zu Berlin

 **LUDWIGSHAFEN UNIVERSITY OF BUSINESS AND SOCIETY**
University of Applied Sciences

Ludwigshafen University of Business and Society

 **EUROPA-UNIVERSITÄT VIADRINA**
FRANKFURT (ODER)

European University Viadrina Frankfurt (Oder)

 **HS PF**

Pforzheim University

 **UNIVERSITÄT DER WIRTSCHAFTS STUDIES**
MANNHEIM

University of Applied Management Studies (Mannheim)

 **HHL LEIPZIG GRADUATE SCHOOL OF MANAGEMENT**

HHL Leipzig Graduate School of Management

 **HFN HOCHSCHULE FULDA**

Heilbronn University of Applied Sciences

 **HOCHSCHULE FÜR WIRTSCHAFT UND RECHT BERLIN**
Berlin School of Economics and Law

Berlin School of Economics and Law
FH Münster University of Applied Sciences, Münster School of Business



FH Münster University of Applied Sciences, Münster School of Business

Greece



ALBA Graduate Business School
India

Indian



Institute of Management Indore



Indian Institute of Management
Ranchi

Italy



School of Management and
Economics (Torino, Italy)



Sapienza University of Rome



University of Padua



LUISS Business School



MIP Politecnico di Milano
Graduate School of Business

Kazakhstan



Almaty Management University

Latvia



Turiba University
Lebanon

Lebanon



LAU Adnan Kassar Business School
Lithuania

Lithuania



Kaunas University of Technology
(KTU)

Netherlands



Zuyd University of Applied
Sciences, International Business
School



The University of Groningen

Morocco



ESCA Ecole de Management

Portugal



ISCTE Business School



ISEG — Lisbon School of
Economics and Management,
Universidade de Lisboa

Republic of China



Southwestern University of Finance
and Economics, School of Business
Administration



Chongqing University
School of Economics and Business
administration



Shantou University School of
Business



National Taiwan University, College
of Management



College of Management | National
Taiwan Normal University



Lingnan University, Faculty of
Business

Republic of Syprus



European University Cyprus

Slovenia



The University of Maribor

South Korea



SOLBRIDGE International School of Business



Kyungpook National University,
College of Economics and Business
Administration

Spain



ESIC Business and Marketing School

Sweden



Mälardalen University, School of
Business, Society and Engineering

Switzerland



Eastern Switzerland University of
Applied Sciences

Thailand



Khon Kaen University, Faculty of
Business Administration and
Accountancy



National Institute of Development
Administration

Turkey



Koç University, Graduate School of
Business

USA



University of Houston, the Bauer
College of Business

VISA

In order to study at GSEM, you need a Russian study visa. Other types of visas (e.g. tourist) are not acceptable! To get such a visa, we will issue an **official invitation** to be presented at the consulate when applying. The mobility coordinator dealing with your application will provide the details. To speed up the process, do not forget to send your passport scan along with the application documents. Please note that for countries outside the EU the invitation is issued by the Russian Migration Office, which takes approximately a month. the invitation letter for EU citizens is issued by the university and usually takes a week.

Please do not be alarmed: regardless of the planned duration of your visit, whether it is a 4-year degree programme or an exchange semester, the invitation will state the first 90 days of your visit as it is the maximum in accordance with current Russian legislation. The visa will then be extended in Russia following a short medical examination.

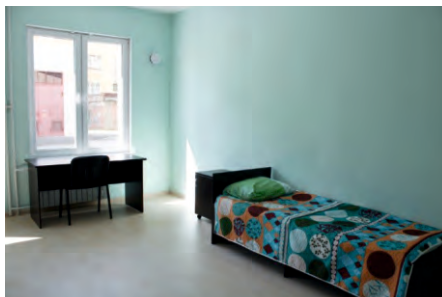
INSURANCE

All foreign citizens are required to have health insurance while staying in Russia. The insurance can be purchased in Russia or in your home country. Please check that the insurance certificate you are buying is valid on the territory of the Russian Federation.

ACCOMMODATION

Dormitory

UrFU has several dormitories available for international students. The price of the accommodation is approximately 1500 RUB per month. To get a place in one of the



university dormitories, indicate your wish when applying and check with your coordinator before your arrival which dormitory you have been allocated to.



Dormitory bedrooms usually house two to four people, kitchen and bathroom are shared among residents of several bedrooms.

Rental accommodation

You can also rent a room or an apartment in Ekaterinburg. The prices vary from 8000 RUB for a room to 25000 RUB for an apartment in the city centre. Please note that if you rent accommodation, **the university cannot handle your registration at the Migration Office**, so that has to be done by you and your landlord.

UrFU provides assistance for students looking for rental accommodation. Please contact the head of the project Rent Flats – Yulia Tolmacheva, e-mail: t.juliya.m@gmail.com, tel. +7 (982) 643-34-95. You can also look at the options in the Vk group https://vk.com/rent_flats and contact Yulia there.

BUDDY

Buddy is a local student who helps international students upon their arrival and during their stay. A buddy is especially needed if you don't speak any Russian. If you'd like a buddy, please indicate that when applying or contact the coordinator dealing with your application.

Contact to find Buddy:

Anna Nevgad, e-mail: annanevgad27@gmail.com,
tel. +7 (922) 141-33-99tel. + 7 999 563-73-75

PACKING NECESSITIES

Please, find the checklist of documents in UrFU Student Guide (section “Upon Arrival”). The list of documents varies depending on your study (for students awarded the scholarship from the Ministry of Education and Science and exchange students, for fee-paying students).

CLOTHES:

- Warm clothes for winter. The temperature can go down to -30°C , so bring an appropriate jacket, footwear and a hat or be ready to buy them in Russia.
- Raincoat and umbrella. It rains a lot in spring and in autumn.
- Summer clothes. It can be up to $+30^{\circ}\text{C}$ in summer.

OTHER:

- Medications and prescriptions
- Emergency contact information
- Outlet adapter

FIRST STEPS UPON ARRIVAL

PICK-UP

You can get a taxi at the Koltsovo Airport to get to the university or Bus №1 to get to the city centre. Alternatively, you can ask for someone from the international service to pick you up by filling in the arrival form in UrFU Guide app (available for iOS and Android).

MOVING IN TO THE DORMITORY

Your buddy will get in touch with you prior to your arrival and arrange a meeting to help you settle in the dormitory. Prior to moving in, you will be required to take a medical examination at the university hospital (Komsomolskaya str., 59b), working hours: Mon-Fri from 8:00 to 20:00, tel.: +7 (343) 375-94-77.

Please note that the medical examination for obtaining a dormitory approval for foreign citizens is PAID.

Documents for inspection:

- 1) passport;
- 2) vaccination certificate or other information about preventive vaccinations;
- 3) information on fluorography of the lungs (for the last year);
- 4) health certificate (if any).

If you have a full package of documents, contact the Center for Adaptation of Foreign Students of UrFU to conclude an agreement for settlement in a hostel - **19 Mira st., GUK-209** (free places may be available).

Before getting into the dorm you must have:

- 1) passport;
- 2) a document confirming admission to UrFU (certificate of acceptance of documents)
- 3) a certificate of medical examination at the Medical Unit of the Ural Federal University;
- 4) the original Health Insurance Policy.

REGISTRATION AND ENROLMENT

After arriving in Ekaterinburg, you will need to register at the university and the Migration Office. In order to do that, you need to come to room GUK-109 at Mira str., 19 (main campus building). If you reside in the university dormitory, your migration registration will be handled by the university international services.

If you are renting accommodation, you will receive instructions for your registration at the university and then will have to do it yourself with your landlord. You have only 3 days to submit migration documents for registration on the territory of the Russian Federation.

ORIENTATION

On September 1st, the First Day at Ural Federal University is held for all first-year full-time students. Special orientation events for international full-time and exchange students are held during the first two weeks of each semester for students to get to know each other, the university, campus buildings and more. The orientation programme will be sent to you by the coordinator prior to your arrival.

After you are done with the registration and enrolment, please visit GSEM International Affairs Office to learn more about your programme, studies, timetable, etc.

Address: Mira str., 19, room И-437

ACADEMIC CALENDAR

	Fall Semester	Spring Semester
Duration	September 1 st - January 31 th	Middle of February - June 30 th
Lectures	September 2 st - December 25 th	Middle of February - May 25 th
Exams	December 25 st - January 31 th	May 25 st - June 31 th
Holidays	February 1 st - February 14 th	July - August

Please note that these dates are approximate and can vary depending on your programme.

National holidays

New Year's Day: January 1st

Victory Day: May 9th

Christmas: January 7th*

Independence Day: June 12th

Women's Day: March 8th

Day of National Solidarity: November 4th

Labour Day: May 1st

* Usually there is a week or little more of holidays from New Year to Christmas

GRADING SYSTEM

During the semester students attend lectures and seminars, make presentations, take intermediate tests, etc. (depends on the course).

At the end of a course, students pass an exam (grading system) or "zachet" (pass or fail).

According to the point-rating system, the final mark consists of intermediate tests, attendance and final exam or "zachet". The final mark is expressed in points, which are then converted into percentages.

Russian Grade	ECTS Grade
5 – excellent (80–100%)	A
4 – good (60–79%)	B
3 – satisfactory (40–59%)	C
2 – failed (below 40%)	F

STUDENT RESEARCH

The advantage of doing research is that it can help both in studies and in academic and practical activities. To this end, we have created **the Centre for Research Support** at GSEM.



The center provides Bachelor students with the opportunity to show themselves as young researchers, to participate in conferences and competitions, write and publish papers in Russian and international journals. Good research results can help to get admitted to a Master's programme at Ural Federal University, as well as other leading Russian and foreign universities.

For Master's students the center can be of great help in writing their thesis, getting high research indicators, publishing in Russian and international journals, participating in projects and grants.

Students can then present themselves to future employers as creative people with inquisitive minds and out-of-the-box thinking.

EVENTS FOR YOUNG RESEARCHERS

The first step can be participation in the **Youth Forum of the Annual International Conference «Russian Regions in the Focus of Changes»** that takes place annually in November. You can make a report in Russian or English and prepare a paper for publication at the conference proceedings. Registration is required for participation, you can make it at the conference website. This is a great opportunity to start publishing papers and test your potential as a young researcher.

[Conference website](#)

In the second semester Spring Research Days take place at GSEM. It is an international conference for Bachelor, Master and PhD students. Traditionally conference is organized in the second half of May. Different sections allow to choose the most interesting topic for report and present it at the conference. As a result of the event, conference proceedings with student reports are published (to be available online and registered at the Russian Science citation index). Information about the event can be found in the spring semester at GSEM website <http://gsem.urfu.ru/ru/events/>

For any questions please contact Irina D. Turgel, Vice Director for Research, Head of the Centre for Research Support, DSc in Economics, Professor.
Tel.: +7 (343) 375-95-23
E-mail: i.d.turgel@urfu.ru

RESEARCH WORKSHOPS OF LABORATORY FOR INTERNATIONAL AND REGIONAL ECONOMICS

Laboratory for International and Regional Economics is the leading GSEM research centre, conducting fundamental and applied research.



Academic Head of Laboratory – Hans Wiesmeth, Professor Emeritus at Technical University of Dresden, President of Saxon Academy of Sciences

Research priorities:

- Health Economics
- Environmental Economics
- Political Economy
- Corporate Social Responsibility Excellence and International Business
- Pension system
- Labour Market
- Optimization of socio-economic systems
- Spatial development

Research Units of the Laboratory:

- Economic Theory - headed by Prof. Dmitriy Vorobyev
- Regional Economics - headed by Prof. Oleg Mariev
- Global Social Responsibility Excellence and International Business - headed by Prof. Zhanna Belyaeva
- Social Sphere Research - headed by Prof. Alexander Nepp

The laboratory for International and Regional Economics organizes regular research workshops in english four times per year. During the events Russian and international faculty members and research fellows discuss research outputs within Laboratory areas of study. We invite you to take part in our research events!

For more information please visit [our website](#) or contact Ms. Nadezhda Poylova, Russia, 620002 Ekaterinburg, Mira str. 19, office И-437, tel. + 7 (343)-94-92, E-mail: econ.international@urfu.ru.

There is a lot going on at the university apart from studies and research. Here are some useful contacts to stay informed about the most interesting social events.



Please note that to keep in touch with local students and groups it might be useful to register at the most popular Russian social network V Kontakte: [https://vk.com/GSEM_Students' Union](https://vk.com/GSEM_Students'_Union):

<https://vk.com/pos.ineu>

ESN Ural Federal: <https://www.facebook.com/esn.uralfederal>

International Student UrFU:

<https://www.facebook.com/internationalstudenturfu/>

For more information about the organizations follow the link:

<http://urfu.ru/en/activities/social-life/student-organizations/>

CREATIVITY CENTRE OF URFU

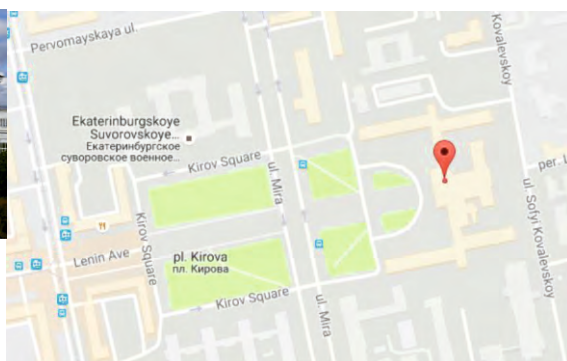
Creativity Center unites all the major creative groups of UrFU.



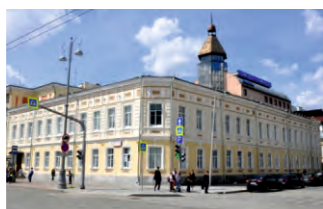
ACADEMIC BUILDINGS



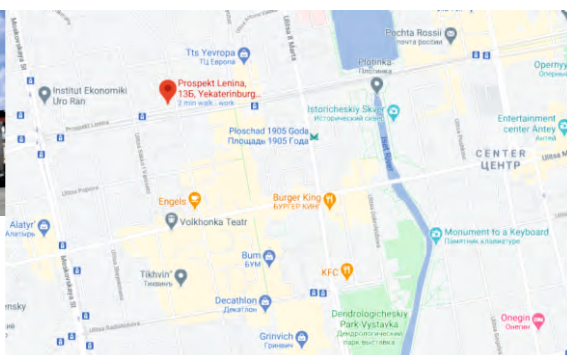
Mira str., 19



Gogolya str., 25



Lenina str., 13b



Main goal of the Center is to develop students' creative abilities, find and fulfill their creative potential.

Main areas of Center's activity are:

- Playing musical instruments
- Choral singing
- Vocal singing
- Theater
- Choreography
- Dancing
- Literature
- KVN (Comedy)

See full list of creative groups at [the link](#).

SPORTS CLUB OF URFU

Sports Club is your key to a great variety of sport opportunities offered by the university.

Amateur Sports / Sports for all:

- Fitness
- Sports Facilities
- Swimming Pool

Professional sports:

- University Teams

Address: Mira str., 19, GUK-216

For more information follow [the link](#).



CANTEENS

Several canteens located in different university buildings are available for students:

Name	Address	Opening Hours
Canteen #4	Mira str., 19, 1 st floor	Mon-Sat 9 am – 8 pm
“Inzhek”	Mira str., 19, 3 rd floor	Mon-Sat 9 am – 6 pm
“Lakomka”	Mira str., 19, 1 st floor	Mon-Sat 10 am – 4 pm

SPORT FACILITIES

<https://urfu.ru/en/activities/sport/sport-facilities/>

UrFU sport facilities include winter stadiums, 11 specialized sports halls, two ski resorts, ice skating rink and 14 athletic fields on the territory of the campus. New sports complex was opened in 2007 and in 2011 the construction of University swimming-pool was finished.



The stadium (football field, running track)
at Mira str., 29



Climbing wall at Mira str., 29



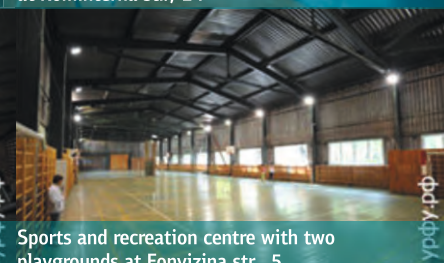
Mini-football field with artificial turf
at Fonvizina str., 5



Sports hall for mini-soccer and handball
at Komintern str., 14



Athletics arena at Mira str., 29

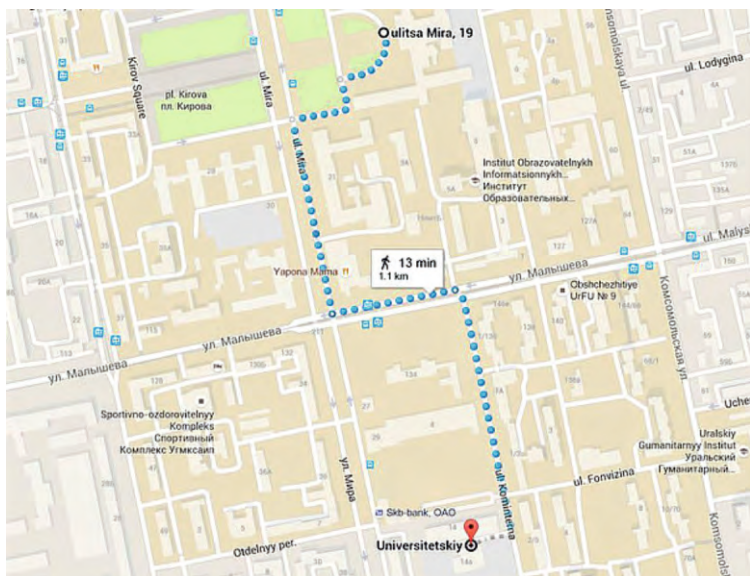


Sports and recreation centre with two
playgrounds at Fonvizina str., 5



Sports hall for volleyball and basketball at Komintern str., 14

The sport complex of Ural Federal University is located on Mira str, 29



SWIMMING POOL

6 lanes, 25 meters each, are open for everybody!



Open hours: 6:30–22:00

Address: Komintern str., 14a

The first session starts at 6:30, the last at 20:45.

The schedule of trainings and classes could be found in the information board at building of a pool.

LIBRARY

The library is one of the leading structural subdivisions of Ural Federal University, an information center for educational and research processes.



Today the Library has:

- Collection: more than 3,000,000 items.
- Number of users: more than 48,000.
- Annual book circulation: more than 1,000,000 items.
- Departments: 8 Loan Departments, 8 Reading Rooms, 3 Information Centers.
- 14 branch libraries are integrated with the structure of UrFU Library.

Almost all library resources are available online for UrFU students and staff members via their personal online accounts. [Library website](#)

INFORMATION CENTERS

Information Centre	Address, Telephone Number	Opening Hours
Humanitarian Information Centre	Turgeneva str., room 269, 263 Tel. 389-94-49	Mon-Fri 9 am – 7 pm Sat 9 am – 4 pm
Natural-Science Information Centre	Kuybisheva str., 48a, room 450 Tel. 261-74-77	Mon-Fri 9 am – 7 pm Sat 9 am – 4 pm
Resource Information and Library Centre	Mira str., 19, room Б-304 Tel. 375-44-77	Mon-Fri 9 am – 7 pm Sat 9 am – 4 pm

READING ROOMS

Reading Room	Address, Telephone Number	Opening Hours
Technical Literature	Mira str., 19, room Б-202 Tel. 375-46-83	Mon-Fri 9 am – 7 pm Sat 9 am – 4 pm
Scientific Technical Literature	Mira str., 19, room Б-301 Tel. 375-44-77	Mon-Fri 9 am – 7 pm Sat 9 am – 4 pm
Technical Periodicals and Author's Abstracts	Mira str., 19, room Б-501 Tel. 375-46-42	Mon-Fri 9 am – 7 pm Sat 9 am – 4 pm
Humanitarian Literature	Mira str., 19, room Б-203 Tel. 375-41-52	Mon-Fri 9 am – 7 pm Sat 9 am – 4 pm
Department of Foreign Literature	Turgeneva str., 4, room 356 Tel. 389-94-48	Mon-Fri 9 am – 5 pm Sat 9 am – 4 pm
Department of Rare Books	Turgeneva str., 4, room 356 Tel. 389-94-48	Mon-Fri 9 am – 5 pm Sat 9 am – 4 pm
Department of Information and Bibliographic Service	Mira str., 19, room Б-401 Tel. 375-44-60	Mon-Fri 9 am – 7 pm Sat 9 am – 4 pm

PRICES

University Dormitory	1500 RUB per month
Public transportation	28 RUB (Underground 32 RUB) for 1 trip see the section "Public transport"
Taxi	200–350 RUB for 1 trip in the city limits
Groceries	6000–8000 RUB per month
Lunch at the university canteen	150–200 RUB
Lunch at a cafe	200–300 RUB
Mobile phone	300–600 RUB per month
Cinema	200–500 RUB for 1 ticket
Theatre, concerts	500–1000 RUB for 1 ticket

The prices shown here are approximate. All prices are given in the Russian national currency – roubles, abbreviated RUB.

GETTING AROUND

Public transport

Ekaterinburg has a broad public transportation network that includes buses, shuttle buses, trams, trolleybuses, and underground. You can pay by an electronic card called "E-Card" or by cash. It is recommended to buy an E-Card with a monthly pass to save money. however, you can always pay by cash in any kind of transport.

You can buy a standard card or a personalised student card giving you rights to discounts (see below). In the latter case, you will need to present your student ID or a reference from the dean's office to the transport office: Lenina av., 101/2 or any other E-Card transport offices listed here: <http://www.ekarta-ek.ru/>

BANK ACCOUNT

It is not necessary to open a bank account in Russia for any transactions required by university, such as tuition fee payment, or government authorities, such as visa extension. You can withdraw cash from ATM (with a service fee), pay by your credit card or exchange your currency at local banks. If you a full-time student receiving a scholarship, you will be issued a debit card of SKB-Bank, its office is located in the main campus building.

HEALTHCARE

When you purchase your insurance, please save the phone number you need to call in case of an insurance event.

In an emergency situation call 112 from your mobile or 03 from a landline for an ambulance or go to the Emergency Room of the nearest hospital. Emergency medical aid for foreign citizens is carried out immediately and free of charge. In any emergency case we recommend that you contact your buddy for assistance.

In any other situation visit your GP (general practitioner – local doctor) who will give you a consultation. If you need treatment from a specialist or at a hospital, the GP will refer you.

You can register at a hospital beforehand so that you don't need to do the paperwork in case of an illness. If you are living in the university dormitory or close to the university, you may register with the UrFU Student Medical Practice (Komsomolskaya str., 59). You may also register at any other hospital close to your accommodation. Also you can see a doctor as a private fee-paying patient at a state or private hospital of your choosing.

Whether you can get free treatment at the dentist's depends on the terms and conditions of your health insurance contract. However, most common practice is that you have to pay for this.

RELIGIONS

In Russia freedom of religion is guaranteed by the Constitution. You can practice any religion or none at all. In Ekaterinburg, just like across Russia, the most widespread is the Russian Orthodox Church. However, you can find other religious institutions in Ekaterinburg at the following addresses:

- Islam: Ramazan Mosque, Dmitrova str., 15; Nur Usman Mosque, Dekabristov str., 34
- Buddhism: Ekaterinburg Buddhism Centre, Raskovoy str., 46; Shad Tchup Ling Buddhist community, Kachkanar mountain, the Sverdlovsk region
- Catholicism: The Roman Catholic Parish of St. Anne, Gogolya str., 9
- Protestantism: First United Methodist Church, Shaumyana str., 82
- Judaism: Synagogue, Ekaterinburg Jewish Community Center, Kuybisheva str., 38a

	Cash	E-Card (standard)	E-Card (student)
1 trip	28 RUB	26 RUB	24,50 RUB
Monthly pass for all transport	–	2380 RUB	1575 RUB
Monthly pass for bus or tram	–	2200 RUB	1100 RUB
20 trips pack for all transport	–	500 RUB	–
40 trips pack for all transport	–	980 RUB	–
70 trips pack for all transport	–	1680 RUB	–

Taxi

Ekaterinburg has numerous taxi companies varying in comfort levels. The price usually starts from 120 RUB. And while getting an English-speaking operator can be a problem, you can always use the following services that have English interface:

- Yandex Taxi app, available for iOS and Android. You can also pay by a bank card so you don't have to speak to a driver.
- Uber app. Also available for making payment by a bank card.
- <https://ekt.rutaxi.ru/index.html>

Driving

To drive a car in Russia, you must have an international driving permit or a national driving license corresponding with the demands of the 1968 Convention on Road Traffic. To be on the safe side, it is advised to obtain an IDP before coming to Russia. Besides, you must always have your passport, visa, and migration card when driving. To rent a car in Ekaterinburg, please check the following services:

- <https://www.avisrussia.ru/>
- <https://europcar.ru/>

Carsharing is a model of [car rental](#) where people rent cars for short periods of time, often by the hour. It differs from traditional car rental in that the owners of the cars are often private individuals themselves, and the carsharing facilitator is generally distinct from the car owner. Carsharing is part of a larger trend of [shared mobility](#).

To rent a car in Ekaterinburg, please check the following services:

- Uramobil: <https://uramobil.ru/ekaterinburg/>
- Delimobil: <https://delimobil.ru/>
- YouDrive: https://youdrive.today/?geoip_city=yekaterinburg

INTERNATIONAL AFFAIRS OFFICE TEAM

HEAD OF THE OFFICE

Ekaterina Demchenko

E-mail: e.a.demchenko@urfu.ru

Tel.: +7 (343) 375-94-92

PROJECT MANAGER

Nadezhda Poylova

E-mail: n.i.poilova@urfu.ru

Tel.: +7 (343) 375-94-92

STUDENT EXCHANGE COORDINATOR

Valeriya Nikonenko

E-mail: valeria.nikonenko@urfu.ru

Tel: +7(343) 375-94-92

PARTNER RELATIONS MANAGER

Dinara Augambayeva

E-mail: d.d.augambaeva@urfu.ru

Tel: +7(343) 375-94-92

International office e-mail: econ.international@urfu.ru

Address: Mira str., 19, room И-437

FOLLOW US



[@urfugsem](https://www.facebook.com/urfugsem)



[@gsem.international](https://www.instagram.com/gsem.international)



[YouTube](https://www.youtube.com/gsemurfu)

#gsemurfu

All people in the photos are UrFU students, staff members and partners.

The University thanks all the participants of the photo sessions.

Photos by: UrFU photo archive and Ilya Safarov, Ekaterina Kiseleva, Sergey Efremov, Vladimir Petrov.

gsem.urfu.ru/en
econ.international@urfu.ru